

DEZIMATOR X™

Mechanical Gaming Keyboard

Owner's Manual V1.0

CONTENTS

- P2 - Introduction**
- P3 - Specifications/Package Contents / System Requirements**
- P4 - Setting Up Your DeziMator X**
- P5 - Installation**
- P6 - Using the “Fn” Key and Related Functions**
- P8 - DeziMator X GUI Software**
- P11 - Macro Setup**
- P14 - Key Assignment**
- P16 - Safety/Maintenance/Contact**

Introduction

Form Follows Function

The DeziMator X is designed with both esthetics and functionalities in mind. The purposefully designed geometric of an arch-shape base formed between the wrist-rest and the trapezoid rear base that tilts the keyboard at a 9 degree angle and 13 degrees when legs are propped, creating a rock-solid, yet balanced chassis and allowing the wrists to be lay flat without any upward-bending to provide a stress-free posture.

Gaming Optimized Toughness

The DeziMator X is composed of 70% aluminum for enhanced sturdiness and durability.

All New EG Mechanical Key Switches

Full mechanical key architecture with EG key switch choices of:
EG Grey – Linear / EG Orange – Tactile / EG Purple – Tactile & Clicky

Individually Programmable LED Backlit Keys

The DeziMator X is fully backlit with EpicGear orange LED that support on-the-fly per-key backlit programming.

4 Customizable Gaming Profiles

Customize each of the 4 profiles to suit your different gaming needs.

Specifications

- Product name: DeziMator X
- Full-mechanical key switches: EG Grey/EG Orange/EG Purple
- Extreme anti-ghosting & N-key rollover
- 4 customizable gaming profiles
- 9 backlit modes including 3 user-defined per-key lighting modes
- 1000Hz extreme-polling, adjustable 125/250/500/1000Hz
- 5 additional macro keys with on-the-fly macro recording
- Gaming mode option for deactivation of the Windows key
- Anti-slip wrist-support
- Gaming-grade braided cable
- Connection type: USB
- Dimension: 528mm x 256mm x 58mm
- Weight: 1.9 kg
- Limited warranty: 2 years

System Requirements

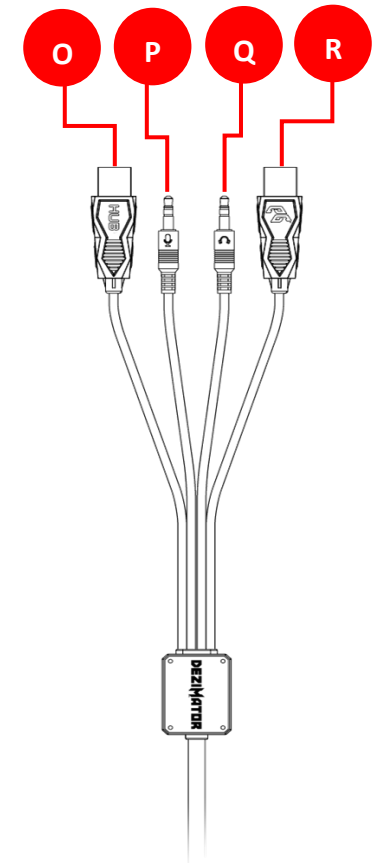
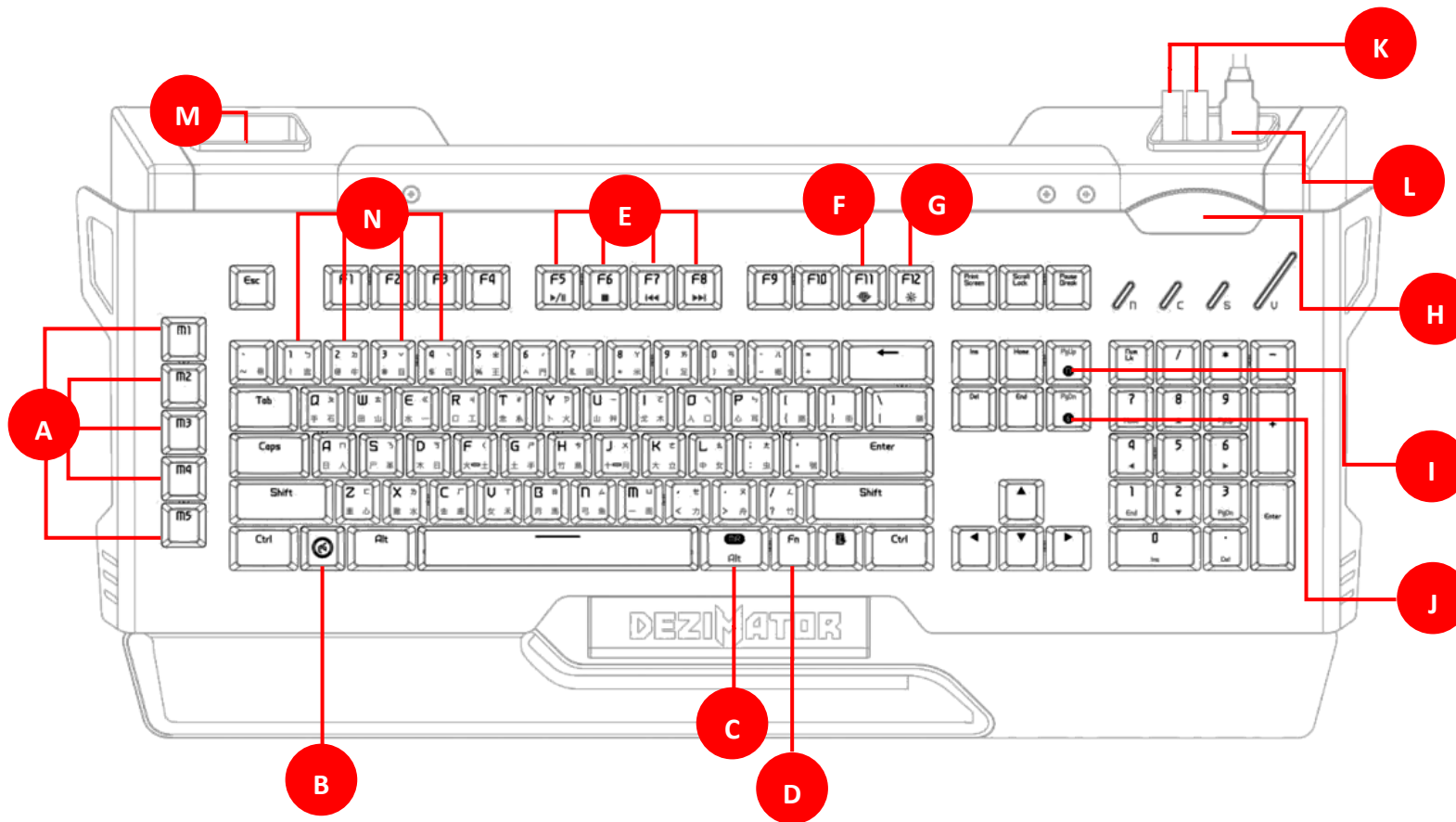
- PC with USB port
- 200MB of free storage space
- Internet connection for driver and software download
- Windows® 10 / Windows® 8 / Windows® 7 / Windows® XP

Package Content

- DeziMator X keyboard x 1
- Multi-language quick start guide/sticker x 1

Knowing DeziMator X

- A. 5 additional macro keys, M1~M5
- B. EG/Windows lock indicator key
- C. On-the-fly macro recording key
- D. Function key
- E. Multimedia control keys, F5~F8
- F. Per-key lighting on-the-fly recording on/off key, F11
- G. Lighting brightness selection key, F12
- H. Volume control wheel, turn wheel to the right for volume up, left for down, double-left to mute and push again to un-mute
- I. N-key rollover key
- J. 6-key rollover key
- K. Earphone-out & microphone-in
- L. USB hub 1
- M. USB hub 2
- N. Gaming profile selection keys, F1~F4
- O. Main USB connector for keyboard
- P. Earphone-out
- Q. Microphone-in
- R. USB connector for USB hubs



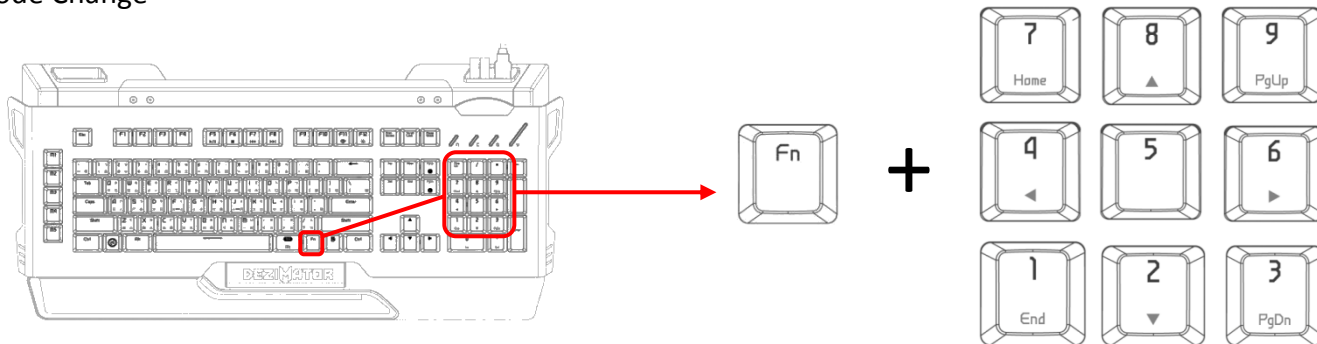
Installation

- Step 1 – Plug DeziMator X USB connector to the computer
- Step 2 – Download the latest DeziMator X GUI software & driver at the following link: <https://www.epicgear.com/en/support/keyboard:dezimotor-x>
- Step 3 – Run install procedure and follow on-screen instruction to complete GUI & driver installation

Note: You should also download and install the DeziMator X firmware if the current version on your DeziMator X is not up-to-date. Current software and firmware version can be determined on the “Support” page of the DeziMator X GUI.

Using the “Fn” Key and Related Functions

1. Backlit Mode Change



Press the “Fn” and “NUM1~9” keys to choose between 9 backlit modes. Mode 6~9 are dedicated for per-key lighting programming, while mode 1~5 are default to specific backlit effect. The 9 modes are defined as follow:

Mode 1) Fully lit, press per-key off → Fn + Num 1

Mode 2) Blackout, press per-key on → Fn + Num 2

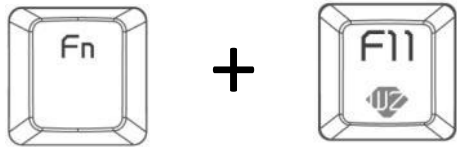
Mode 3) Breathing light effect, → Fn + Num 3

Mode 4) Fully lit → Fn + Num 4

Mode 5) Blackout → Fn + Num 5

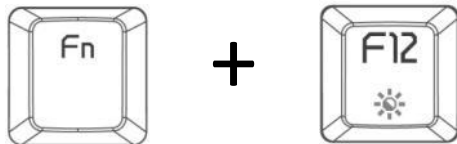
Mode 6~9) Programmable per-key lighting → Fn + Num 6~9

2. Per-key Lighting Programming



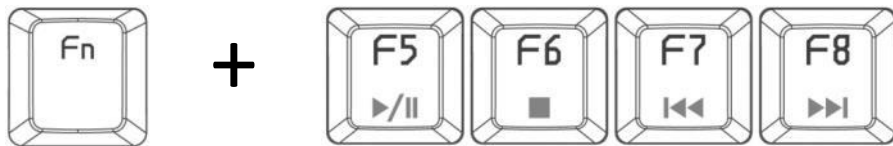
First, choose one of the four per-key lighting modes (Fn + Num 6~9), then press “Fn” and “F11” simultaneously to activate per-key lighting programming. Once activated the “F11” key will be flashing then simply press the keys you want to set backlit on, press again to set backlit off and press “Fn + F11” again to complete recording.

3. Backlit Brightness Adjustment



Press the “Fn” and “F12” key to adjust the brightness of the LED backlit in 4 levels.

4. Multimedia Control



Press the “Fn” and “F5~F8” keys for multimedia control commands defined as follow:

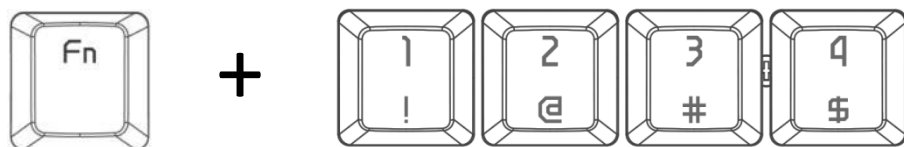
Fn + F5 → Play/Pause

Fn + F6 → Stop

Fn + F7 → Rewind/Back

Fn + F8 → Forward/Next

5. Gaming Profile Selection



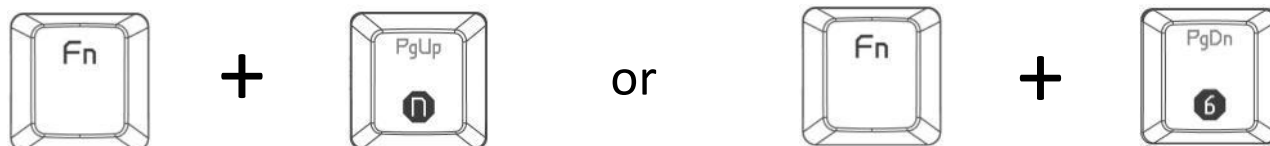
Press the “Fn” and “1~4” keys simultaneously to select between 4 user-defined gaming profiles. Each profile can be customized in the DeziMator X GUI.

6. EG Game Mode - Deactivation of Windows Key



Press the “Fn” and “EG” key to enter the EG Game Mode where the Windows Key function will be disabled. When in Game Mode the “EG” key will be lit up.

7. N-Key Rollover & 6-Key Rollover Mode Change



Press the “Fn” and “PgUp/n” key for NKRO mode of up to 20 keys rollover, which the “PgUp/n” key will be lit up. Press the “Fn” and “PgDn/6” key for 6-Key rollover mode, which the “PgDn/6” key will lit up. Please note that the factory default mode is set at 6-key rollover and when switching between modes it will take about 10 seconds for the switching process to complete.

IMPORTANT: You should always leave the DeziMator in 6-Key rollover mode for all backlit modes, macro setup and key assignment.

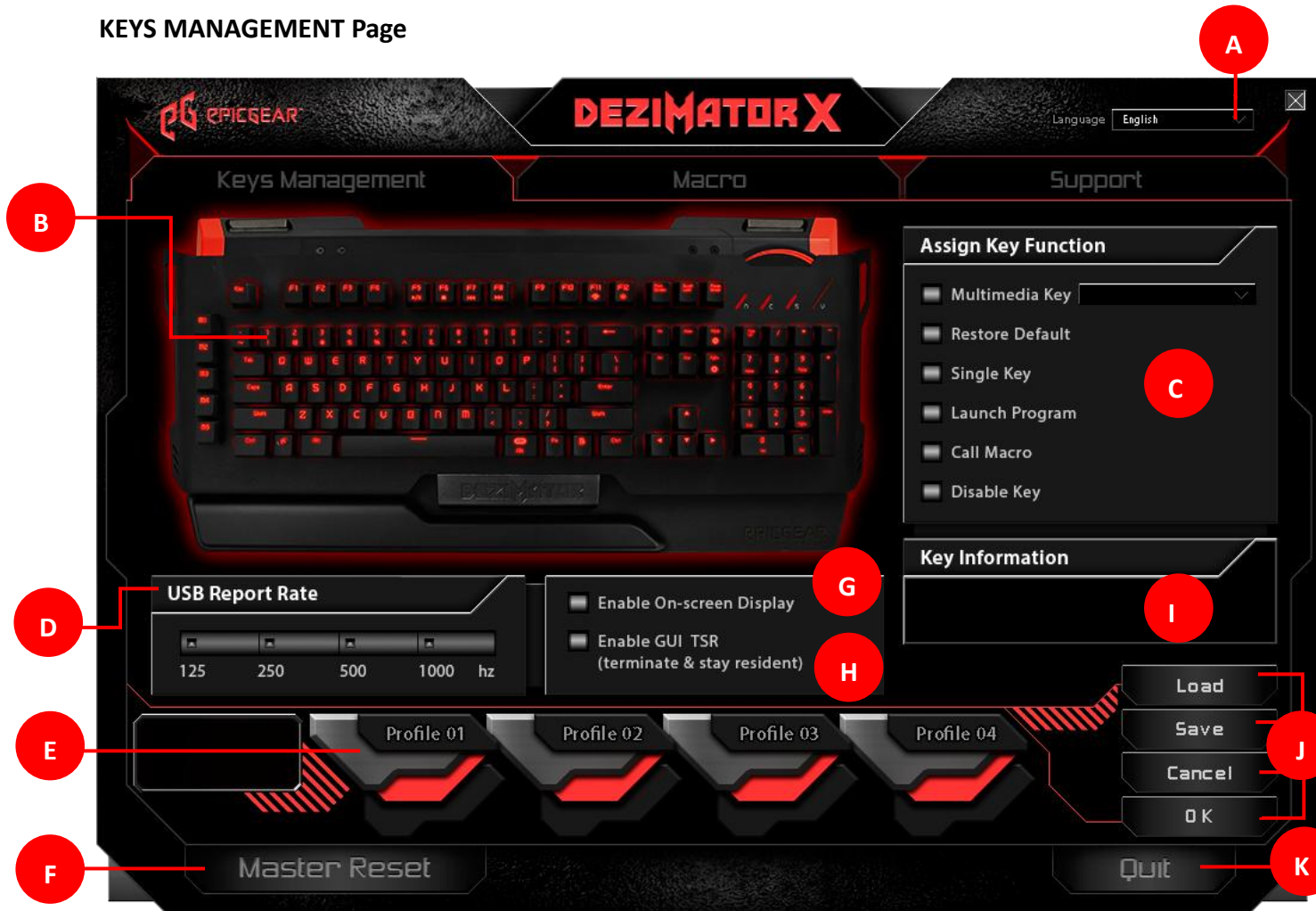
DeziMator X GUI Software

The DeziMator X GUI software can be downloaded from the Support page on EpicGear’s official website at the following link:

<http://www.epicgear.com/en/support/software-downloads>

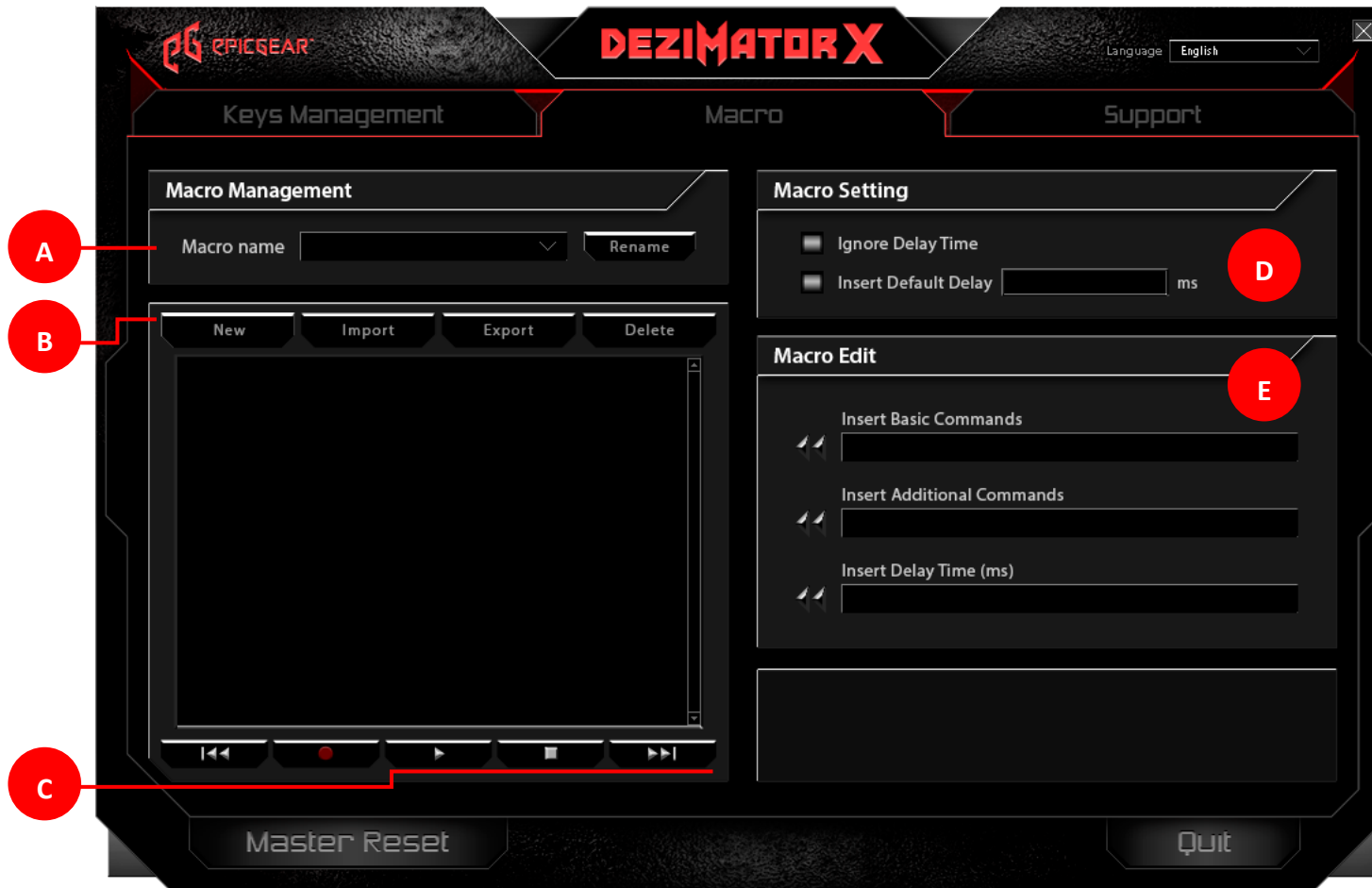
The GUI contains three main pages, Keys Management, Macro Management and Support. In the following section, the features of each page will be explained.

KEYS MANAGEMENT Page



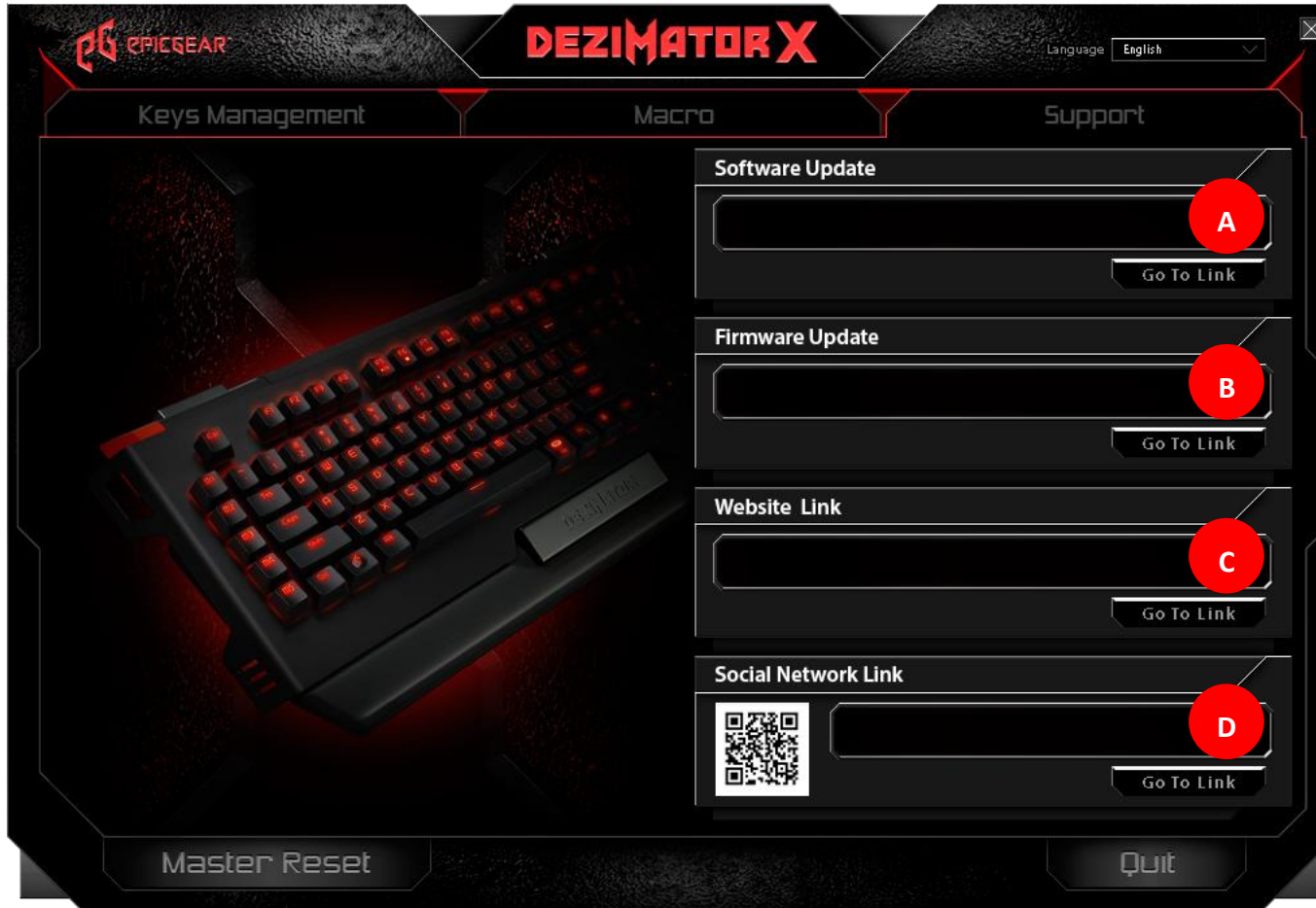
- A. GUI language selection, drop-down menu
- B. Click on the key you wish for key function assignment and it will turn red
- C. Click on the function you wish to assign to the key selected in B
- D. USB report rate adjustment, 4 levels
- E. Keyboard profile selection, select between Profile 1~4
- F. Click to reset all settings to factory default
- G. Enable/disable on-screen display of gamer profile selection
- H. Enable/disable of GUI software staying resident after closing
- I. Key information shows you the key function that is currently assigned to the selected key
- J. Click “Load” to load previously saved profile; click “Save” to save the current profile; click “Cancel” to cancel; click “OK” to apply settings
- K. click to quit and exit the GUI software

MACRO Page



- A. Macro file selection in the drop down menu and click on “Rename” to rename the selected macro file
- B. Click “New” to create a new macro; click “Import” to import a previously saved macro file; click “Export” to export the current macro file; click “Delete” to delete the current macro file
- C. Macro line control buttons - from left to right: *top of macro lines*, *record*, *playback*, *stop* and *end of macro lines*
- D. Delay time control; choose “Ignore Delay Time” to set up macro without any delay time between each line of command; or choose “Insert Default Delay” and key in the desired milliseconds of delay time between each line of command
- E. Macro edit: basic command and delay time insert. See P15 for details

SUPPORT Page



- A. GUI software update; click on “Go To Link” to be directed to EpicGear’s official webpage where the latest version of GUI software can be downloaded
- B. Firmware update; click on “Go To Link” to be directed to EpicGear’s official webpage where the latest firmware can be downloaded
- C. EpicGear official website link; click on “Go To Link” to be directed to EpicGear’s official website
- D. EpicGear social media link; click on “Go To Link” to be directed to EpicGear’s official social media page

Macro Setup

New Macro Setup:

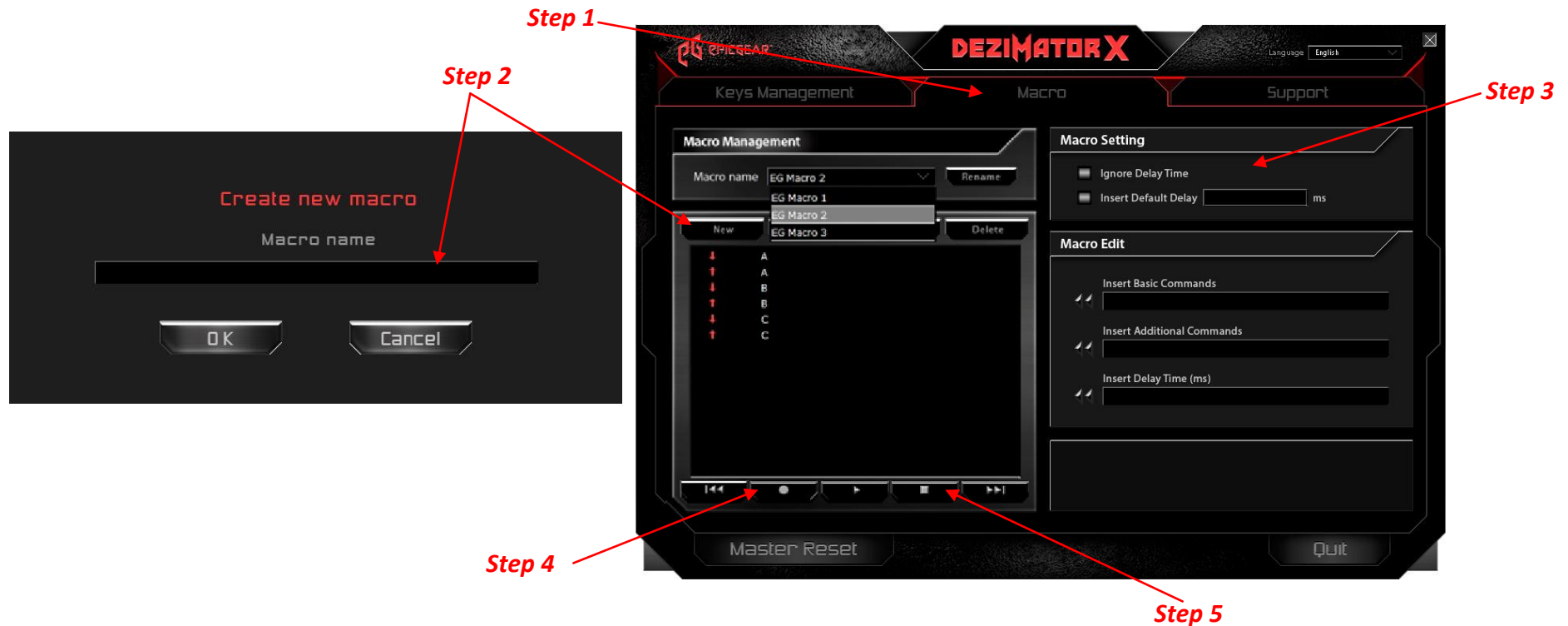
Step 1 – Go to “Macro” page.

Step 2 – Go to “Macro Management” section; click on “New” and enter a filename for the new macro in the popup; click “OK” when you have typed in the desired filename.

Step 3 – Under “Macro Setting” section; click on the “Ignore Delay Time” for no delay between commands; click “Insert Default Delay” and type in the desired milliseconds of delay time between commands.

Step 4 – When you are ready to record, under “Macro Management” section click on the recording button (circle imprint) to start the recording process. The circle on the recording button will be flashing red when recording is in progress.

Step 5 – When you have completed recording, under “Macro Management” section, click on the stop button (square imprint) to stop the recording process. The circle on the recording button will stop flashing when the recording is stopped.



Edit Existing Macro:

Step 1 – Go to “Macro” page.

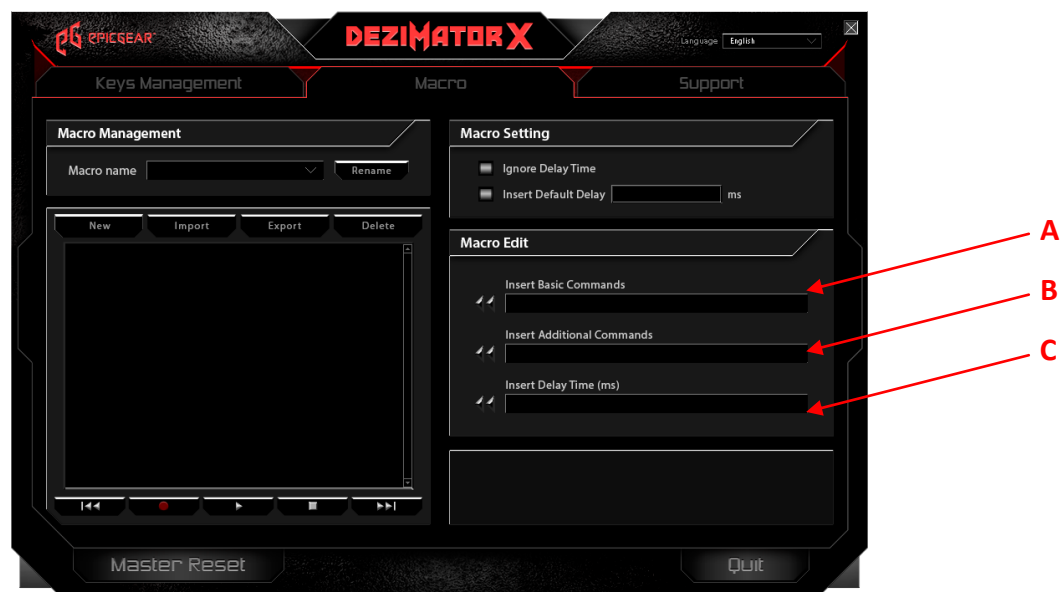
Step 2 – Go to “Macro Management” section; click on the drop down menu from “Macro name” to choose the existing macro you wish to edit. This will pull up the selected macro with its detailed lines of command in the window under the “Macro name” drop down menu.

Step 3 – In the detailed macro lines of command window; right click on the specific line you wish to edit and choose an action between “Insert Default Delay”, “Edit” or “Delete”. The “Insert Default Delay” action will insert the current milliseconds setting being entered under the “Macro Setting” section. The “Edit” action will call up a pop up window for you to enter a replacement single key command to the current line. The “Delete” action will simply delete the current line being selected.



Macro Edit – Insert Basic commands, Insert Additional Commands & Insert Delay Time (ms):

- A. Insert Basic Commands – on “Macro” page, under “Macro Edit” section, the “Insert Basic Commands” drop down menu provides basic Windows commands such as copy, past, cut, print, save and etc. to be inserted as lines of command to a macro. Click on the double-arrow icon to the left of the drop down menu to insert.
- B. Insert Additional Commands – on “Macro” page, under “Macro Edit” section, the “Insert Additional Commands” drop down menu provide you with additional Windows commands such as switch windows, close windows, zoom in, zoom out and etc. to be inserted as lines of command to a macro. Click on the double-arrow icon to the left of the drop down menu to insert.
- C. Insert Delay Time (ms) – on “Macro” page, under “Macro Edit” section, the “Insert Delay Time (ms)” allows you to enter a desired delay time to be inserted between lines of command one at a time. Click on the double-arrow icon to the left of the drop down menu to insert.



Key Assignment

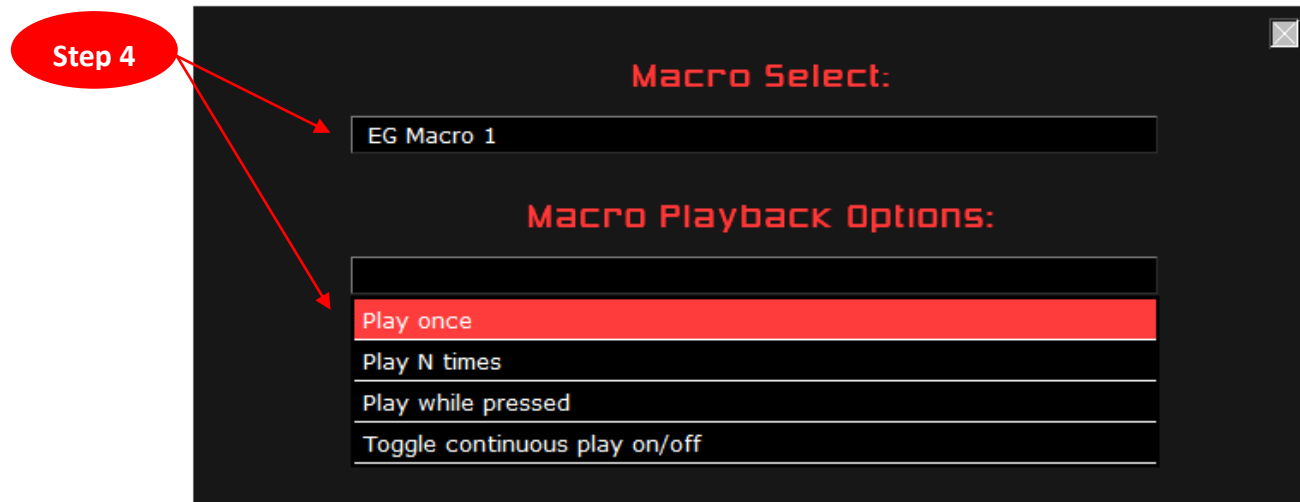
Assigning Macro:

Step 1 – Go to the “Keys Management” page, as shown on P8.

Step 2 – On the DeziMator X diagram, click on the key you wish to assign the macro to and the selected key will turn red.

Step 3 – Under the “Assign Key Function” section; click on “Call Macro” and choose the desired macro from the popup dialogue box.

Step 4 – After you have selected the desired macro from the dropdown menu on the popup dialogue box, click on one of the playback options for the macro.



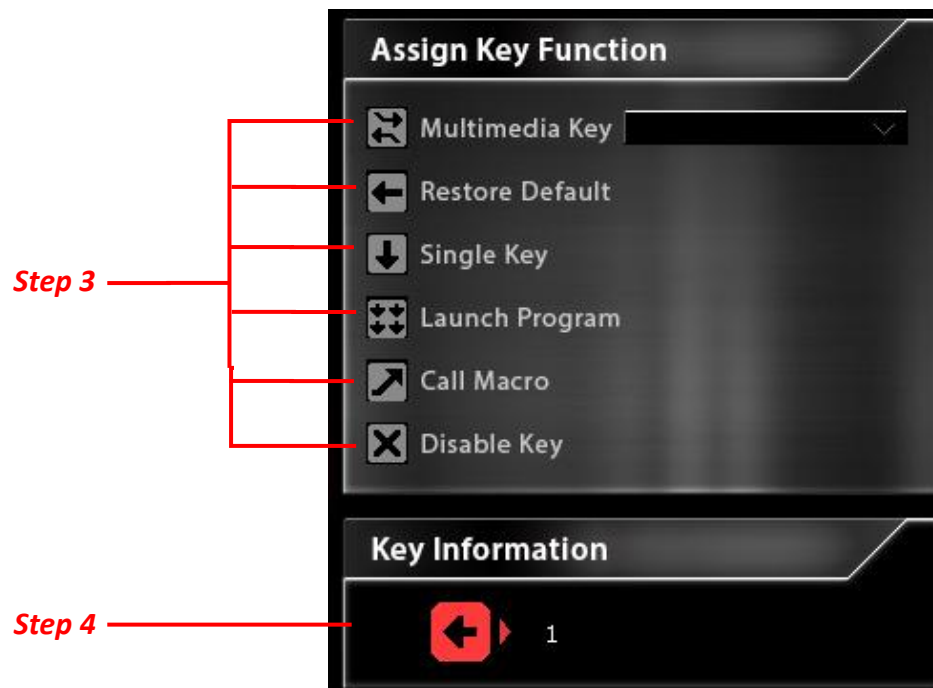
Assigning Other Functions:

Step 1 – Go to the “Keys Management” page, as shown on P8.

Step 2 – On the DeziMator X diagram, click on the key you wish to assign the function to and the selected key will turn red.

Step 3 – Under the “Assign Key Function” section; click on one of the 6 key function titles - Multimedia Key, Restore Default, Single Key, Launch Program, Call Macro or Disable Key.

Step 4 – After you have selected the desired function and successfully assigned it to the designated key, the new function should be displayed in the window under “Key Information” section.



Safety & Maintenance

In order to keep your EpicGear gaming device at maximum performance and safety, we suggest that you adopt the following guidelines:

1. When you suspect your EpicGear gaming device is not functioning properly, unplug the device and contact EpicGear tech support at support@epicgear.com. Do not attempt to service or fix it yourself.
2. Do not take apart the device yourself, by doing so will also void your warranty.
3. Keep your device away from liquid, humidity or moisture.
4. There is little maintenance required to keep your EpicGear gaming device in optimum condition. When cleaning is required, we recommend unplugging the device from USB port and clean the device with soft cloth or brush.

Contact

Tech Support: support@epicgear.com

Official Website: www.epicgear.com

Facebook Fan Page: www.facebook.com/epicgeargaming

PR & Marketing Inquiry: pr@epicgear.com

Sales Inquiry: sales@epicgear.com

